

If your next architectural project requires the look of an aged or weathered roofing or cladding product, the Weathered Metal Series™ will give your project the distinctive aged appearance and the rich, classic character that until now, only time — and the elements — could provide.

AGED TO PERFECTION

With age comes a classic and sublime beauty, and now that look is available for your next roofing or cladding project. In 2005, United States Steel Corporation introduced COR-TEN AZP® Prepainted Steel Sheet to provide architects, building owners and homeowners with an enhanced performance product to its COR-TEN® steel.

Now, with our unique, Weathered Metal Series™, you have a choice of two additional, distinct stages of aging — moderately weathered Raw and more heavily weathered Robust — to accompany the fully weathered appearance of COR-TEN AZP® steel. Each pattern is carefully crafted and engineered to give your next roofing or cladding project the authentic look of timelessness. In addition to these two new finishes, we've also expanded our selection of colors, giving you an even greater variety of looks for your next project.

The Weathered Metal Series™ is a fluoropolymer coating system that uses cool pigment technology that can be applied over G-90 Hot-Dipped Galvanized coated steel sheet and GALVALUME® coated steel sheet. Colors available are: GALV-TEN™, COPPER-TEN™ and COR-TEN AZP®, each with its own solar reflectance rating.

Now, you have the power and the freedom to design in a way that until now, only time and Mother Nature could.



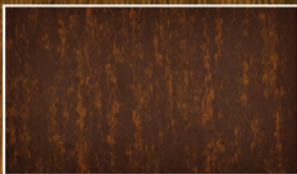
COR-TEN AZP® Raw
SRI = 28 SR = .28 TE = .88



COPPER-TEN™ Raw
SRI = 53 SR = .47 TE = .86



GALV-TEN™ Raw
SRI = 74 SR = .62 TE = .87



COR-TEN AZP® Robust
SRI = 27 SR = .27 TE = .88



COPPER-TEN™ Robust
SRI = 49 SR = .44 TE = .86



GALV-TEN™ Robust
SRI = 78 SR = .65 TE = .87



U. S. Steel



Precoat Metals

SRI = Solar Reflectance Index
SR = Solar Reflectance
TE = Thermal Emittance

Patent Pending

PERFORMANCE PROPERTIES

WEATHERED METAL SERIES™

Typical Test Results*

Performance	Test Method	G-90 Hot-Dipped Galvanized coated steel sheet	GALVALUME® coated steel sheet
Adhesion	ASTM D 3359	No loss of adhesion	No loss of adhesion
Flexibility	ASTM D 4145	1T to 3T, no loss of adhesion	1T to 3T, no loss of adhesion
Pencil Hardness	ASTM D 3363	HB Minimum	HB Minimum
Reverse Impact	ASTM D 2794	3x metal thickness, NTO	3x metal thickness, NTO
Abrasion Resistance	ASTM D 968	65 ± 10 liters per mil	65 ± 10 liters per mil
Specular Gloss	ASTM D 523	Less than 25 at 60°	Less than 25 at 60°
Salt Spray	ASTM B 117	1,000 hours - 1/16" max creep from scribe	1,000 hours - 1/16" max creep from scribe
Humidity	ASTM D 2247	2,000 hours - no field blisters	2,000 hours - no field blisters
Dew Cycle Weatherometer	ASTM D 3361	1,000 hours - Chalk Rating no less than 8	1,000 hours - Chalk Rating less than 8

*Results may vary depending on substrate and gauge.

The information contained herein is based on tests and reports considered reliable, but is presented without guarantee or responsibility as to the applicability or correctness of this information or the suitability of our products, whether used singly or in combination with other products.

AT A GLANCE

MATERIAL	<ul style="list-style-type: none"> > GALVALUME® coated steel sheet > Galvanized coated steel sheet 									
MATERIAL WIDTH	<ul style="list-style-type: none"> > GALVALUME® coated steel sheet - 49 in. maximum > Galvanized coated steel sheet - 62 in. maximum 									
MATERIAL THICKNESS*	<table border="0"> <thead> <tr> <th></th> <th>GALVALUME® coated steel sheet</th> <th>Galvanized coated steel sheet</th> </tr> </thead> <tbody> <tr> <td>></td> <td>.0142 in. minimum</td> <td>.0142 in. minimum</td> </tr> <tr> <td>></td> <td>.040 in. maximum</td> <td>.057 in. maximum</td> </tr> </tbody> </table>		GALVALUME® coated steel sheet	Galvanized coated steel sheet	>	.0142 in. minimum	.0142 in. minimum	>	.040 in. maximum	.057 in. maximum
	GALVALUME® coated steel sheet	Galvanized coated steel sheet								
>	.0142 in. minimum	.0142 in. minimum								
>	.040 in. maximum	.057 in. maximum								
MAXIMUM CROSS SECTION*	<p style="text-align: center;">STEEL</p> <ul style="list-style-type: none"> > 2.4 sq. in. 									
COIL SIZE ENTRY	<ul style="list-style-type: none"> > 60,000 lb. maximum > 78 in. OD maximum > 20 in. and 24 in. ID 									

Weathered Metal Series™ is produced at the Precoat Metals Jackson, Mississippi facility only.

*General guidelines — Dependent upon alloy, temper and yield strength.

GALVALUME® is an internationally registered trademark of BIEC International Inc. and some of its licensed producers. COR-TEN® and COR-TEN AZP® are registered trademarks of United States Steel Corporation.



600 Grant Street Pittsburgh, PA 15219
877.798.7909 p www.ussteel.com



Precoat Metals

1310 Papin Street St. Louis, MO 63103
314.436.7010 p www.PrecoatMetals.com